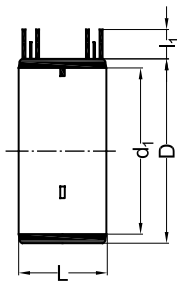


Electrofusion coupler akafusion

 HDPE
akafusion


d ₁	Art. Nr.	D	L	l ₁	System
40	41 04 95	52	54	22	5A/80s
50	41 05 95	62	54	22	5A/80s
56	41 56 95	68	54	22	5A/80s
63	41 06 95	75	54	22	5A/80s
75	41 07 95	87	54	22	5A/80s
90	41 09 95	102	56	22	5A/80s
110	41 11 95	122	58	22	5A/80s
125	41 12 95	137	66	22	5A/80s
160	41 16 95	172	66	22	5A/80s
200	41 20 95	230	153	31	220V/420s
250	41 25 95	285	153	31	220V/420s
315	41 31 95	350	153	31	220V/420s
200	41 20 65	*	175	31	220V/420s
250	41 25 65	*	175	31	220V/420s
315	41 31 65	*	175	31	220V/420s

* replaces Art.Nr. 41xx95 with the same diameter in the course of 2006

The akafusion electrofusion couplers are delivered with centre stops. These stops can easily be removed with a knife, so that the coupler can be used as a slide-coupler. Before welding, cut pipe ends squarely with a pipe cutting tool, remove the oxide film with a scraper and mark the insertion depth. The couplers can easily be welded with our akafusion control box and other suitable control boxes.

Tools

Control box akafusion CB160

akafusion



d ₁	Art. Nr.	Dim.	V~	Hz	kg	A max	W max
40-160	41 98 10	20x10x7	230	50/60	1,4	5	1150

The akafusion CB160 control box is suitable for welding electrofusion couplers from d₁ 40 to 160 mm.

Control box akafusion CB315

akafusion



d ₁	Art. Nr.	Dim.	V~	Hz	kg	A max	W max
40-315	41 98 00	270x245x175	230	50/60	4,3	10	2300

The akafusion CB315 control box is suitable for welding electrofusion couplers from d₁ 40 to 160 mm (with yellow cable) and electrofusion couplers from d₁ 200 - 315 mm (with blue cable).
Yellow and blue output leads are standard supplied with control box Art.Nr. 419800.

Output leads for control box akafusion CB315

akafusion



d ₁	Art. Nr.	System	Colour
40-160	41 98 51	5A/80s	yellow
200-315	41 98 52	220V/420s	blue

Cable for simultaneous welding
with electrofusion machines akafusion

akafusion



d_1	Art. Nr.	System	Colour
$d_1+x < 200$	41 98 55	5A/80s	yellow

The sum of the diameters of the electrofusioncouplers < 200 mm.